

SHICK counseling is free, unbiased, confidential, and available to anyone with questions about Medicare.

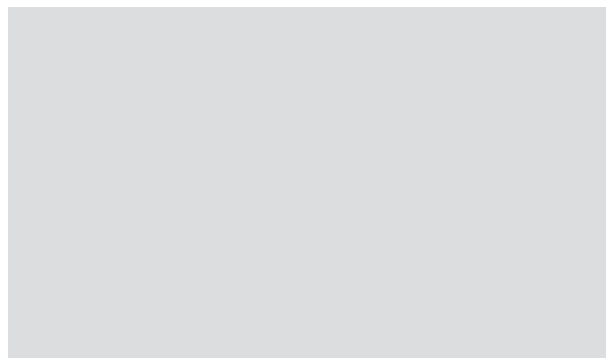
Trained counselors are available statewide to assist with:

- Medicare questions
- Medicare claims and appeals
- Medicare fraud
- Medicare Prescription Drug Plans
- Medicare Advantage plans
- Medicare Supplement Insurance (Medigap)
- Employer Group Plans as supplement insurance
- Medicaid
- Other health insurance options
- Long-Term Care options
- Medicare Savings Programs
- Extra Help with prescription drugs

To find a **SHICK** counselor in your area and to schedule a free, confidential counseling session with a trained, unbiased counselor in your area **call 1-800-860-5260.**



This brochure is not a legal document. The official Medicare program provisions are contained in the relevant laws, regulations and rulings. The SHICK Program is funded by a grant from The Centers for Medicare and Medicaid Services, Washington, D.C.



DEPARTMENT ON AGING
New England Building
503 S. Kansas Avenue
Topeka, KS 66603
1-800-432-3535
www.agingkansas.org

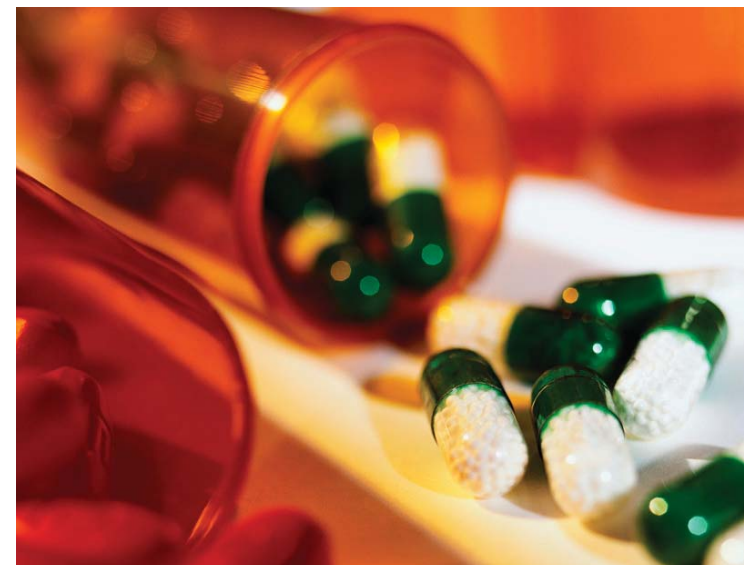
The Kansas Department on Aging (KDOA) does not discriminate on the basis of race, color, national origin, sex, age or disability. If you believe you have been discriminated against by either KDOA or a KDOA funded program, please contact KDOA to receive additional information on filing a complaint:

1-800-432-3535 (voice); 1-800-766-3777(TTY).

March 2011

KANSAS DEPARTMENT ON AGING

Need Extra Help paying for your prescription drugs?



You may qualify for Extra Help from Medicare...



What is Medicare?

Medicare is a federal health insurance program that covers

- Over 35 million individuals age 65 and older
- Over six million individuals under 65 with disabilities
- Individuals with ESRD (End Stage Renal Disease)

What is Medicare Part D?

Medicare Prescription Drug Coverage (Part D)

- Insurance that covers both generic and brand name prescriptions
- Coverage is provided through private insurance companies
- Many types of plans are available

(Most people will pay a monthly premium for Medicare Prescription Drug Coverage.)

Are you on a limited income?

Are you having trouble paying for your medications?

In 2011 Extra Help is available if

- you have income less than \$16,335 per year (\$1,361.25 per month) for an individual or \$22,065 per year (\$1,838.75 per month) for a married couple
- resources up to \$12,640 for an individual or \$25,260 for a married couple (excludes primary residence and one automobile)

If you qualify for Extra Help:

- Medicare will pay for most of your prescription drug costs
- You will automatically receive help paying
 - Premiums
 - Deductibles
 - Co-pays of your Medicare Prescription Drug Coverage
- There is no coverage gap

Apply for Extra Help by contacting:

Senior Health Insurance Counseling for Kansas (SHICK)

1-800-860-5260

Social Security Administration

www.socialsecurity.gov
1-800-772-1213
Ask for form SSA-1020



Questions about Medicare?

Call **1-800-860-5260**...a SHICK Counselor will be happy to help
http://www.agingkansas.org/SHICK/shick_index.html