

# **ACH\* BED, OCCUPANCY & STAFFING TRENDS**

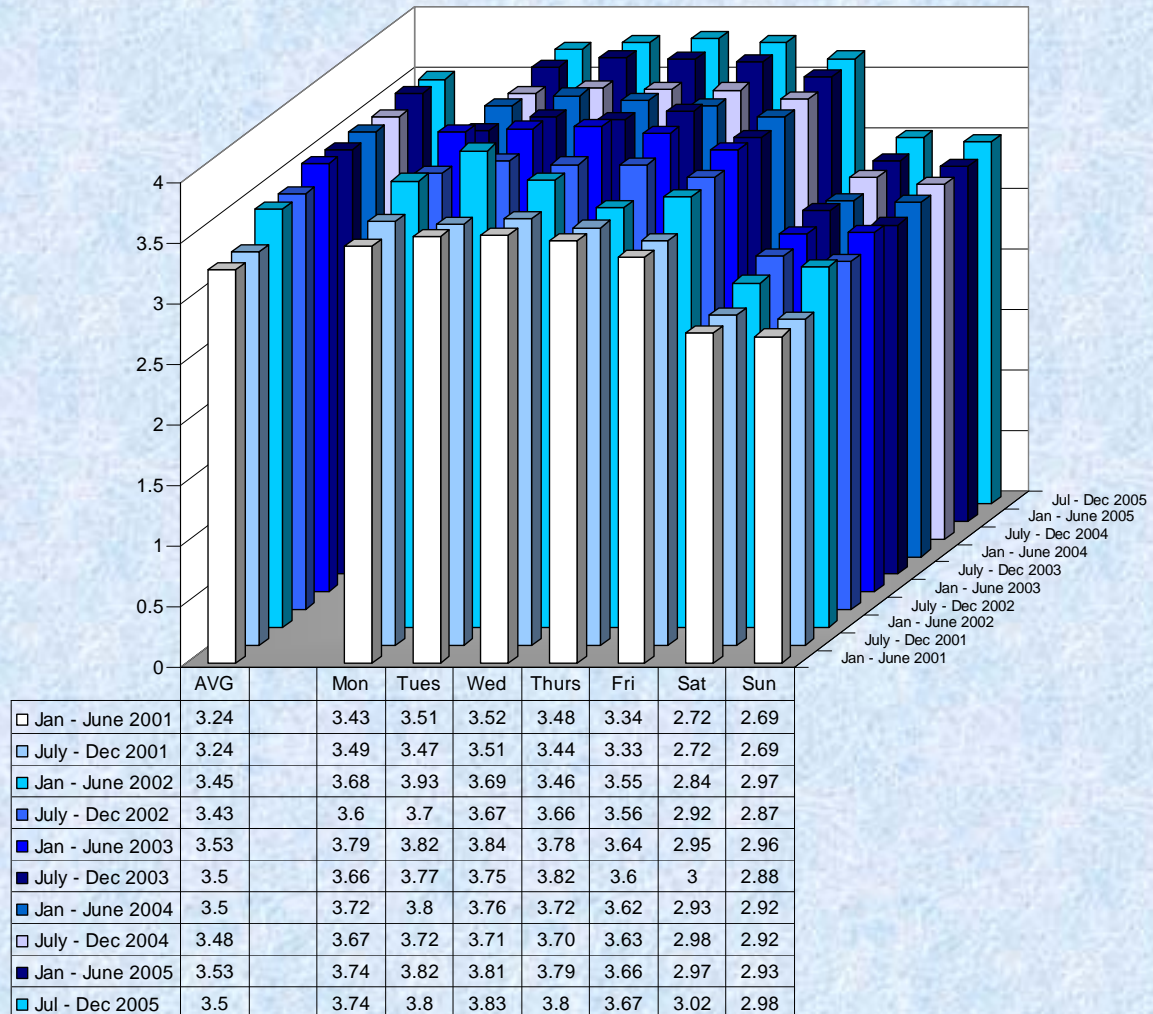
## **2001 - 2005**

---

\*ACH = Adult Care Homes (includes Nursing Facilities and Nursing Facilities for Mental Health), Assisted Living Facilities and Residential Health Care Facilities. Data is from the Adult Care Home Semi-Annual report for a specified reference week during each 6 month period. Bed, occupancy and staffing information are all self-reported by facilities and are not independently verified. Please note that the data presented here is based upon those facilities which submitted timely and usable semi-annual reports thus it includes most but not all of the licensed facilities during the reporting periods. Hospital long term care units are not included.

**KANSAS DEPARTMENT ON AGING**  
**LICENSURE, CERTIFICATION & EVALUATION COMMISSION**

# NURSING FACILITY STAFFING RATIOS



2001-05 CHANGE +8.02%